

AC CONFIG	GEN CABLES	MAINS CABLES	LOAD CABLES
3P4W	L4, L5, L6, N1	L7, L8, L9, N2	L10, L11, L12, N3
3P3(4)W	L4, L5, L6, (N1)	L7, L8, L9, (N2)	L10, L11, L12, (N3)
1P3W	L4, L5, L6	L7, L8, L9	L10, L11, L12
1P2W	L5, L6	L7, L9	L10, L12
1P1P	L5, L6	L7, L8, (L9), N2	L10, L11, (L12), N3

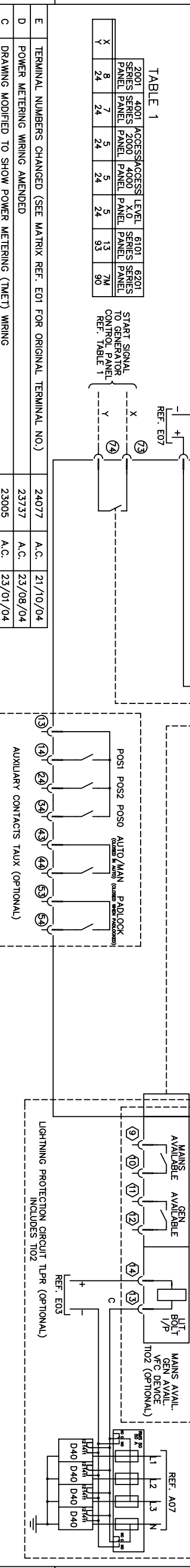
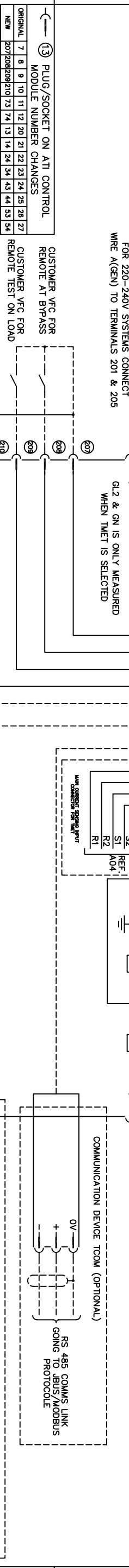
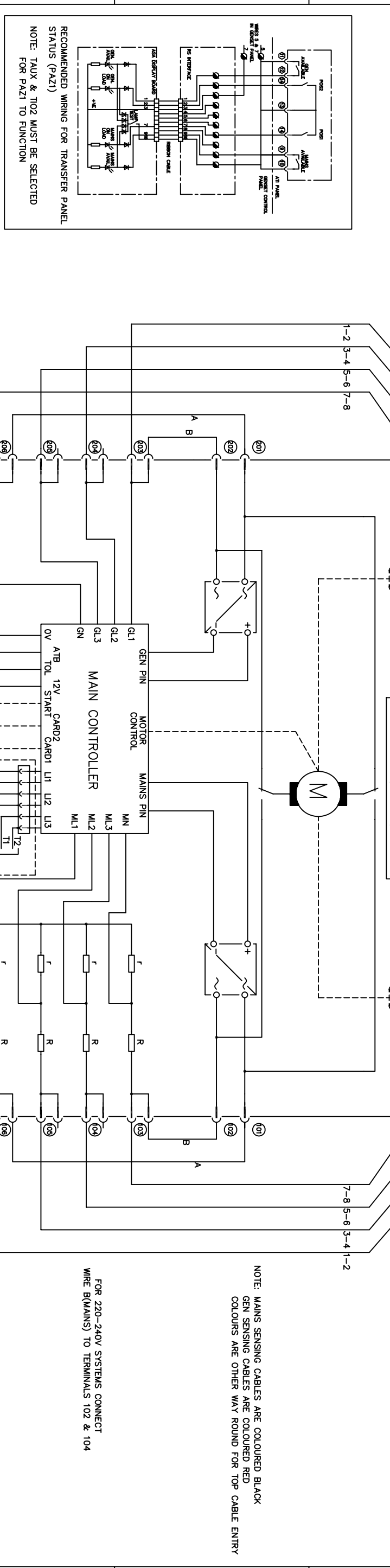
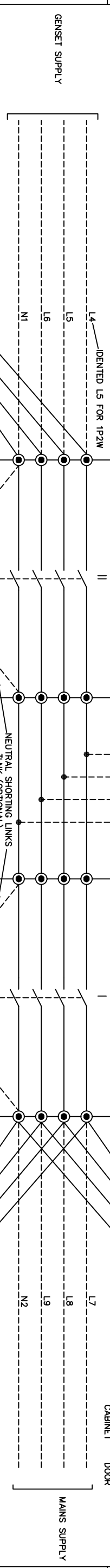
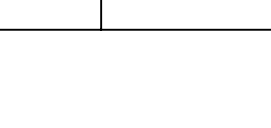
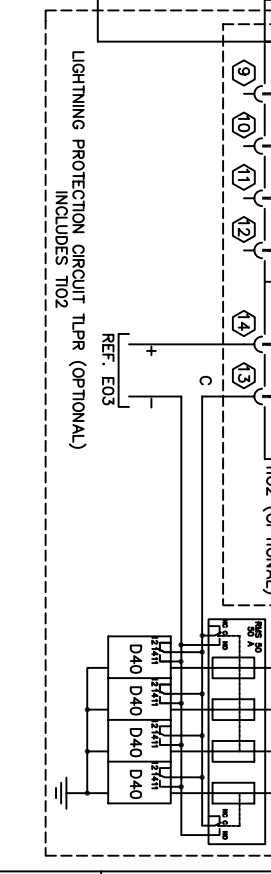
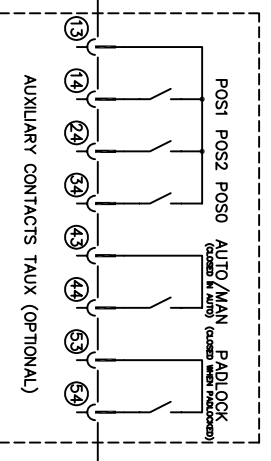


TABLE 1

2001 SERIES ACCESS PANEL	4001 ACCESS PANEL	4000 X.O. PANEL	6101 SERIES PANEL	6201 SERIES PANEL
8	7	5	5	13
24	24	24	24	93
X	Y	Y	Y	74
				90

ISSUE	DESCRIPTION	BY	DATE
A	FIRST ISSUE	22156	-
B	WIRE IDENT'S 1 & 2 CHANGED TO A & B	22812	20/10/03
C	DRAWING MODIFIED TO SHOW POWER METERING (TMET) WIRING	A.C.	23/01/04
D	POWER METERING WIRING AMENDED	A.C.	23/08/04
E	TERMINAL NUMBERS CHANGED (SEE MATRIX REF. E01 FOR ORIGINAL TERMINAL NO.)	A.C.	21/10/04



ISSUE	DESCRIPTION	BY	DATE
F	PLUG/SOCKET ON ALL CONTROL MODULE	ECR/DGR	-
G	PLUG/SOCKET ON T102 OPTION	-	-

THIS DRAWING IS COPYRIGHTED AND MAY BE COPIED ONLY FOR THE PURPOSES OF MAINTAINING THE PURCHASED EQUIPMENT BY THE PURCHASER

DO NOT SCALE

DRN. BY	A. CRANKSHAW	TITLE	WIRING DIAGRAM OF ATI SERIES CHANGEOVER PANEL. (OPTIONALISED)
DATE	12/08/03	SHEET	A3
APPD. BY	<i>[Signature]</i>	ORIGINAL SCALE	N.T.S.
DATE	02/11/2004	DRAWING NO.	D39590
		ISSUE	E